

## Automation

- [Automated Guided Vehicles](#)
- [Conveyor Systems](#)
- [Integrated Systems](#)
- [Palletizing Systems](#)
- [Picking & Packing](#)
- [Scanning & Vision Systems](#)
- [Software & Controls](#)
- [Sortation Systems](#)
- [Vertical Lift Modules & Carousels](#)

## Products

- [Conveyors](#)
- [Industrial LED Lighting](#)
- [Lift Tables](#)
- [Mezzanines](#)
- [Modular Offices & Buildings](#)
- [Rack, Shelving & Storage Equipment](#)
- [Warehouse Supplies](#)

## Services

- [Design, Engineering & Consulting](#)
- [Project Management & Installation](#)
- [Service & Preventative Maintenance](#)

## More Throughput in Less Space

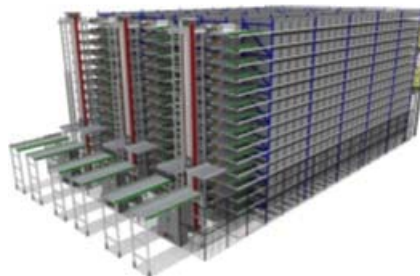


The Dematic Multishuttle solution is a highly effective and efficient storage/staging engine that provides precise load sequencing at high rates, in a compact footprint with operational flexibility. The Multishuttle system is ideal for supplying items to piece pick fulfillment modules (goods to person picking) or mixed case pallet building operations. It is also used in applications for short-term buffer storage as well as applications involving storage or as a manufacturing support subsystem for production operations.

The Multishuttle 2 System consists of multiple levels of racking, shuttles, buffer conveyors and software. Each level includes input/output conveyor and a shuttle that travels horizontally to access loads stored in the rack structure, typically totes, cartons or trays. An extraction device on each shuttle accesses the loads in the rack. Since there is a shuttle captive in each aisle, on each level, ultra-high throughput can be achieved. At the end of each aisle, a vertical lift is utilized to bring the load to the input/ output conveyor. Load sequencing occurs as loads are retrieved in the order required for the order fulfillment function. Multishuttle 2 is ideal for supplying product to piece pick order fulfillment modules or mixed case pallet building operations. It can also serve as a pick face replenishment solution.

### Optional Telescopic Load Extractor Reaches Both Sides of Rack

The innovative eight finger design of the load extractor and overlapping telescope arms allow for the use of only two telescopic sections to store products single, double, or multi-deep. The load capture fingers are plastic cast, carbon fiber reinforced for robust long term performance. This load extractor design minimizes space between products and maximizes storage density.



Front view of a typical 3 aisle Multishuttle subsystem, with double deep rack. A dedicated dual lift module provides flow into and out of each of the rack levels.

For more information on the Multishuttle, contact Conveyor Handling Company

at 877-553-2296 or email [info@conveyorhandling.com](mailto:info@conveyorhandling.com)

## Visit Conveyor Handling Company

[www.conveyorhandling.com](http://www.conveyorhandling.com)  
877-553-2296

### Maryland Office

6715 Santa Barbara Court  
Elkridge, MD 21075-5830  
Phone: 877-553-2296 Fax: 410-379-0700

### Follow Us



### Pennsylvania Office

665 Forman Road, Suite 201  
Souderton, PA 18964  
Phone: 443-561-3029 Fax: 267-203-8450